

JUNIOR RANGERS

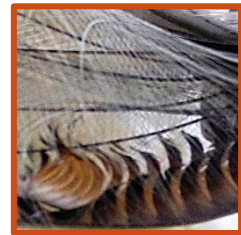
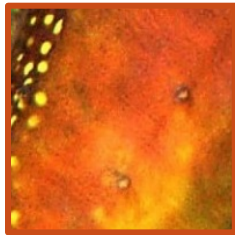


Neighbourhood Watch

Park rangers really know how to look after our parks. But how? It starts with learning all about the plants and animals that live there as well as acknowledging the Traditional Owners who have made the land their home for thousands of years.

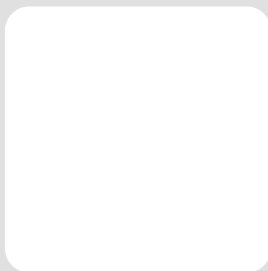
Guess who?

See if you can match up some of our famous park inhabitants; the golden wattle, weedy seadragon, Otway black snail and lyrebird with the close-up pictures below.

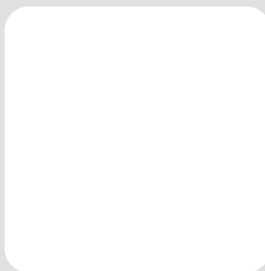


Go outside with a notebook and pencil, or a camera if you have one, and draw or photograph something familiar close-up so it's hard to identify. Pay attention to any patterns or interesting features as they will provide a clue to help them. Write in the answers, cover them up, and then challenge your friends and family to try and guess what they are.

A



B



C



Fold paper back along the dotted line
after writing the correct answers below

Answers:

A

B

C



Victoria's network of parks and reserves form the core of Aboriginal cultural landscapes. Parks Victoria respects the deep and continuing connection that Traditional Owners have to these landscapes and recognises their ongoing role in caring for Country.

JUNIOR RANGERS



Climate scientists

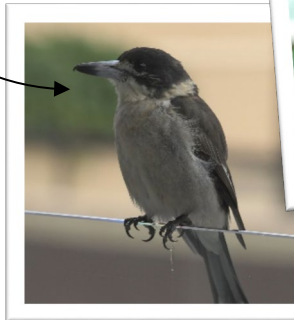
What if we are seeing things in nature that we might not normally see this time of year? This can happen with both our animals and our plants. Birds might start nesting or plants begin to flower earlier than usual. Scientists are monitoring this more and more, particularly as our climate continues to change.

Next time you are out in a park or even in your garden, you can become a citizen scientist and monitor some of our birds to see what they are doing this time of year. The following birds are on the 'ClimateWatch' list of easy ones to spot. They are also birds which might respond more to a change in our climate.

Australian Magpie



Butcherbird



Eastern Yellow Robin



Dusky Moorhen

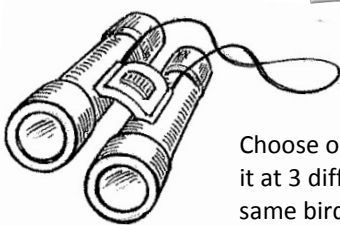
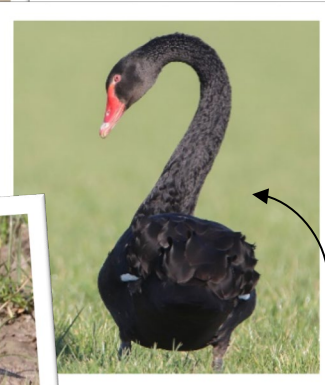
Blackbird



Red Wattlebird



Black Swan



Choose one of the species you might see in your local park or garden and see if you can observe it at 3 different times and write down your results on the next page. It doesn't have to be the same bird each time, just the same species of bird. You can even observe it at different times of the same day if you want to.



Victoria's network of parks and reserves form the core of Aboriginal cultural landscapes. Parks Victoria respects the deep and continuing connection that Traditional Owners have to these landscapes and recognises their ongoing role in caring for Country.

JUNIOR RANGERS

My bird observations!



Bird species: _____

Observe the bird for 5 minutes and record its behaviour by ticking the boxes below.

	With a mate	Calling	Feeding	Nest building	Bird on nest/eggs	Bird feeding young	Other (write down the behaviour)
DAY ONE							
Date:							
DAY TWO							
Date:							
DAY THREE							
Date:							

Are the birds behaving differently to what you would expect? **Yes / No**

Write a sentence or two explaining why and send in your results to us at juniorrangers@parks.vic.gov.au



Want to do more? Next time you're out and about why not look for some particular plants or animals, take a picture and record what is happening using the app from the [ClimateWatch website](https://climatewatch.org.au).

If you don't have the app, you could still use the [ClimateWatch website](https://climatewatch.org.au) ([www.climatewatch.org.au](https://climatewatch.org.au)) to see which particular species our scientists want us to observe. Just pick two or three species you would like to focus on.



Victoria's network of parks and reserves form the core of Aboriginal cultural landscapes. Parks Victoria respects the deep and continuing connection that Traditional Owners have to these landscapes and recognises their ongoing role in caring for Country.